

TOUR CLUB LEISURE GUIDE

**Issue No. 23
2024**



**tourclub@baytours.co.nz | 06 845 2736 (ext. 1)
www.baytours.co.nz**

Welcome to Bay Tours & Charters

Leisure Guide



Hello everyone and welcome to another exciting edition of our Leisure Guide as we head into 2024. We all know how difficult the last year has been for many in our region. This has been well documented. But the year's theme here at Bay Tours has been one of continued re-expansion, despite the challenges we've all faced. Some of you may have already met **Kevin England**, our now new(ish) **General Manager**. Ken and I have known Kevin for many years and his commercial

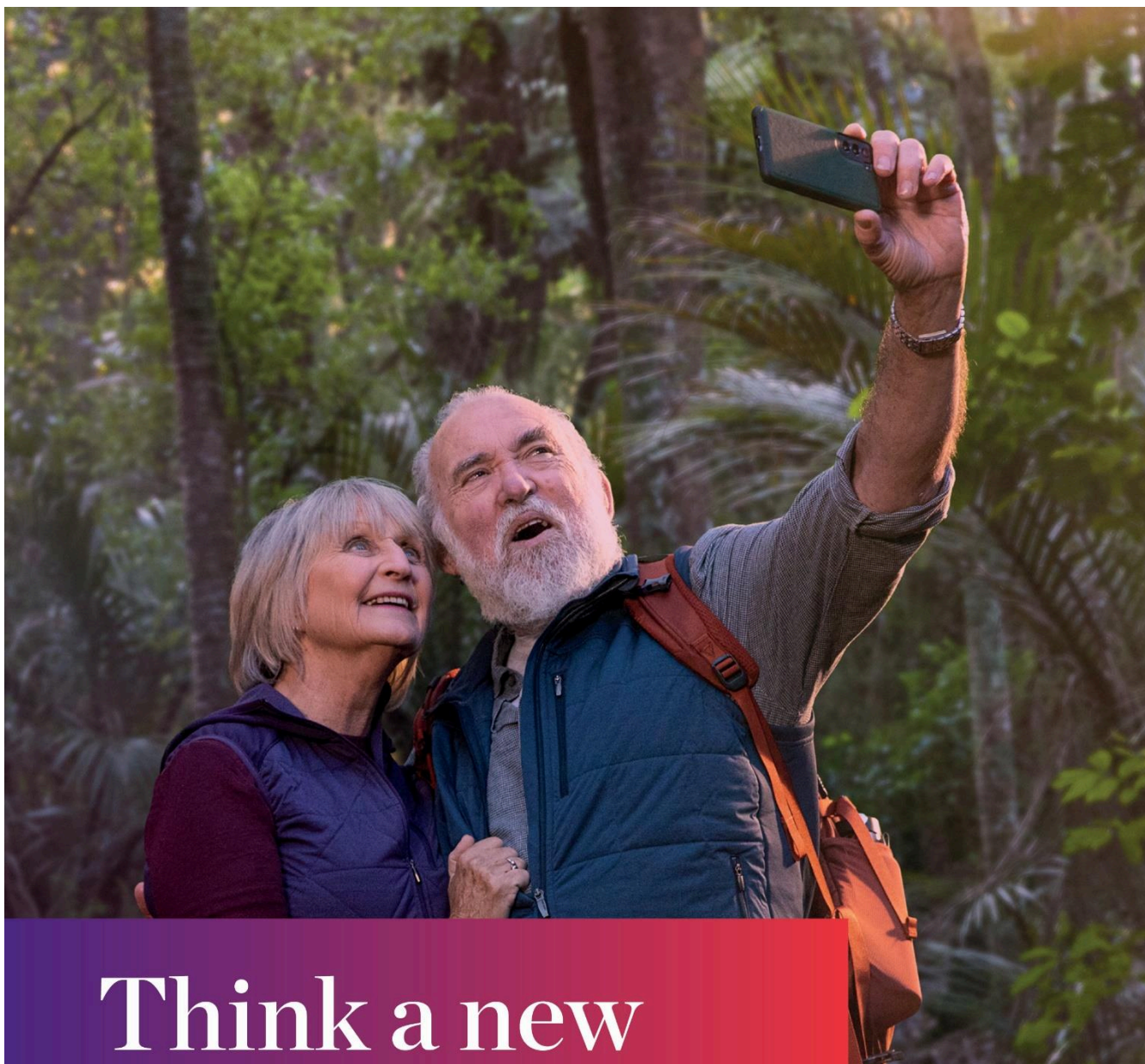
experience and business acumen is already proving its worth for Bay Tours, and his brief of taking oversight of the day-to-day operation is freeing Ken and I up to focus on growth. I want to also welcome **Kayley O'Gorman** to the role of **Tour Club Co-ordinator**, she will likely be the first person you encounter when you call us or visit. As I write this Kayley is in only her second week with us but is already coming to grips with our systems and her bright personality is a pleasure to have around. Kayley and Kevin carry on our tradition of having a bewildering number of office staff with names starting with 'K'.

Ken (oh, stop it!) and I rolled the dice and took a cruise in October – in part to get a feel for where the industry was in its return after the pandemic. We were delighted with the experience, and it has prompted us to look at putting a cruise back into the Tour Club offering. I know some members have been looking forward to a return of a cruise tour.

We've successfully completed many tours in the second half of 2023 – not least being our most 'far reaching' NZ mainland tour – South Of The South. Peter and Katrina hosted this exploration of NZ's deep south, including Stewart Island, and everyone enjoyed amazing southern hospitality and stunning weather. Luxury Lodge Lunches and Wonderful Waikato Gardens were both recent successes with Tim's horticultural background adding extra value to the latter. There have been plenty of wonderful Day Trips out and about recently and you can look forward to plenty more of them in this issue as well. Also look out for the return of the much-anticipated **Exploring Blenheim To Christchurch** tour, which includes the exciting **Coastal Pacific** train. Sticking with trains, look for the **River City Steam Train** tour in February. Because who doesn't love a steam train, right? We take our Luxury Lodge Lunches series to a new level with our **Capital & Country Luxury Dining** tour and for the ultimate indulgence look for **A Luxury Weekend At Treetops Estate**. We continue to place a strong emphasis on supporting local people and businesses. Look for the **orange sun** logo again in this issue. This signifies a Day Trip in which we stick exclusively to Hawke's Bay destinations that continues the '**Local Support For Local People**' spirit. We also continue to say "Thank You!" to our Patron Members with a couple of Patron Only lunches and also look for the strongly discounted **Patron Special Price** in green on a few trips too. So, as always, there's a lot going on in this issue.

Ken and I would like to, on behalf of all the Bay Tours team, wish you a happy holiday season and a bright and healthy 2024.

Kerren & Ken Withington



Think a new outlook on life.

Retirement isn't for retiring, it's for new adventures.

With more freedom to pursue your hobbies and passions, you can live the active, fulfilling retirement you've worked hard to achieve.

Think this sounds like you or someone you love?

Summerset Palms
06 833 5852 | summerset.co.nz/teawa

**Summerset**
RETIREMENT VILLAGES

General Information

Payments:

Credit card: We accept credit card payments by Visa or MasterCard but there is a 5% credit card handling fee. To avoid incurring this bank cost you can pay by;

Cash or internet banking; Internet banking, please place the **tour number with the first 4 letters of your surname in the reference field e.g. 1014WITH**. If you are paying for more than one tour, please place the other tour number in the code field. If you are paying your patron fee in the same payment, please write PATRON in the particulars field.

This also applies if you visit a Kiwibank branch to make an over-the-counter deposit. You MUST highlight your reference details on your deposit slip to the teller to ensure they key them in for your transaction.

Our bank account number to pay into is: **Kiwi Bank 38 9014 0316437 00.**

Dietary Requirements:

If you have any dietary requirements, please bring this to our attention when you are booking your trip to enable us to accommodate your needs.

Accommodation Preferences:

If you wish to have a hotel room on a lower level or if you prefer two beds instead of a double, please let us know at the time of booking so we can accommodate your needs.



Mobility Checkpoint:

Some tours which have an aspect to them that will require a specific level of mobility will be flagged with this **RED MAN** sign: This DOESN'T necessarily mean you will be unable to participate. We simply ask that you call the office to discuss the specific requirement.

Kaye & Kayley - Your Tour Club Co-ordinators



Kaye returns to the team from parental leave in mid-January and will once again be your point of contact for all things to do with our multi-day/overnight tours & travel insurance.

Nau mai ki a Kayley, our new BTAC team member! She will be your first point of call when visiting our office in Onekawa and for all things regarding our day tours. On that note, a little reminder that all our day tours are now full payment upon booking as it saves our drivers collecting cash upon pick up.



Post to:

PO Box 12221, Ahuriri, Napier 4144

Phone us at:

(06) 845 2736 – EXT 1

E-Mail: Tour Co-ordinator Kayley at:

tourclub@baytours.co.nz

Visit us at our address:

26 Turner Place, Onekawa, Napier 4110

Tour Club Booking Form

Date	Tour	Tour Name	Patron	Member
Wed 10 Jan	110	Celebrating Wairoa	\$165	\$185
Thu 11 – Wed 17 Jan	111	Chatham Islands	\$5,390	\$5,940
Thu 25 Jan	125	Summer Visit to Bush & Beach	\$120	\$150
Thu 8 Feb	208	The Sunflowers of Pahiatua	\$185	\$205
Tue 13 Feb	213	Kens Big Mystery Day Out	\$160	\$205
Fri 16 – Sat 17 Feb	216	Pop-Up Globe Shakespeare: Romeo & Juliet	\$685	\$755
Wed 21 Feb	221	Patrons Lunch to Say Thanks at Hygge	\$70	N/A
Sun 25 – Mon 26 Feb	225	River City Steam Train	\$795	\$875
Sun 25 – Mon 26 Feb	225A	Daniel O'Donnell – Palmerston North	\$750	\$825
Wed 28 Feb – Wed 13 Mar	228	Exploring Tasmania	\$9,905	\$10,895
Sat 2 Mar	302	Martinborough Fair	\$130	\$145
Thu 7 Mar	307	A Visit to Waihau Farm & Lunch	\$160	\$180
Sun 10 Mar	310	Taupō Market & Glassblowing	\$125	\$140
Wed 13 Mar	313	Summer Progressive Lunch	\$155	\$175
Sun 17 – Tue 19 Mar	317	The Bridge to Nowhere	\$1,335	\$1,495
Wed 20 Mar	320	Beach Hop & Lunch	\$150	\$170
Fri 22 – Thu 28 Mar	322	Central North Island Cycle Trail	\$3,355	\$3,690
Tue 2 – Fri 5 Apr	402	Whanganui River & Forgotten Highway	\$1,995	\$2,175
Mon 8 – Tue 16 Apr	408	Exploring Blenheim to Christchurch	\$4,995	\$5,495
Tue 9 – Sat 13 Apr	409	Molesworth & Rainbow Stations & More	\$2,975	\$3,275
Thu 11 Apr	411	Dinner at Valley D'Vine	\$145	\$175
Wed 17 – Fri 19 Apr	417	Capital & Country Luxury Dining	\$1,745	\$1,920
Tue 23 Apr	423	Autumn Pub Lunch & Quiz	\$150	\$170
Fri 26 Apr	426	Fiddler on the Roof – Dinner & Show	\$160	\$180
Tue 30 Apr – Mon 6 May	430	Delights of the Hauraki Gulf	\$3,325	\$3,660
Fri 10 – Sat 11 May	510	Best Exotic Marigold Hotel – Wellington	\$750	\$825
Mon 13 May	513	Lunch at Cape Kidnappers #1	\$245	\$270
Wed 15 May	515	Dinner at St Georges	\$175	\$195
Fri 17 – Mon 20 May	517	Bluff Oyster & Food Festival	\$2,555	\$2,775
Mon 27 May	527	Lunch at Cape Kidnappers #2	\$245	\$270
Fri 31 May	531	The Beach Boys Experience – Napier	\$195	\$220
Sat 8 Jun	608	Feilding Craft Market	\$125	\$160
Wed 12 Jun	612	Patrons Lunch to Say Thanks at The Filter Room	\$70	N/A
Thu 27 Jun	627	Dinner at Mangapapa	\$180	\$205
Fri 27 – Sun 29 Sep	927	A Luxury Weekend at Treetops Estate	\$2,265	\$2,495
Sat 28 – Sun 29 Sep	928	WOW #1 – Wellington	\$735	\$810
Sat 5 – Sun 6 Oct	1005	WOW #2 – Wellington	\$735	\$810
Wed 13 – Sun 17 Nov	1113	Great Barrier Island Escape	\$3,630	\$3,995
Thu 21 – Fri 29 Nov	1121	Hidden Gems – Ashburton to Dunedin	\$TBC	\$TBC

Tour Club

Conditions & Important Booking Information

1. Reservations & Payments

Generally, the price of day trips should be made in one payment, with the exception of those where a deposit is requested in the Leisure Guide.

For all overnight or longer tours, a deposit as stated in the Leisure Guide is payable to secure the booking. The balance must be paid in full by the declared date in the Leisure Guide.

Any customer who has booked a package with Bay Tours shall not assign, purport to assign, or attempt to re-sell the package (whether whole or in part), rights or interests under these Terms without prior consent from Bay Tours.

Any reservation made within six (6) weeks of the tour departure must be paid in full.

2. Medical

Please notify us of significant medical issues when you are considering making a booking so that we can inform you of any potential risks that may present themselves as part of the tour. Bay Tours reserves the right to decline/refuse a booking because of medical concerns.

3. Health & Fitness

At Bay Tours we pride ourselves on giving personal service to our customers. However, our guides are not qualified to provide individuals, who are not of reasonable, able-bodied health, the special time and attention they may need to make their tour a memorable experience. We're very happy for you to join us if you have a caregiver that can accompany you and provide help to you along the way.

4. Behaviour

Bay Tours & Charters Ltd is not a common carrier and therefore reserves the right to refuse to carry or admit a person whose behaviour is considered detrimental to the enjoyment of the group. By travelling with Bay Tours & Charters Ltd the traveller agrees to accept the authority of Bay Tours staff leading the tour and accept their decisions. Our staff are entitled to a safe working environment and our passengers to a great holiday. Any threats to safety, either physical or verbal, or inappropriate behaviour by a passenger may result in their removal from the tour. If staff require a passenger to leave a tour, no refunds will be given and the passenger will be responsible for their own travel costs from that point.

5. Travel Insurance – ask us for a quote with CoverMore

In association with Cover-More Travel Insurance we now offer to members insurance against unforeseen events which may necessitate you cancelling your travel with Bay Tours. This is part of a comprehensive cover policy. It will secure your refund in the event of you having to withdraw from a booking. **We just need your date of birth in order to provide you with a quote.** There is a \$25 excess, payable for each claimable event.

- Should you decide to make use of this insurance, it must be purchased at the time you make your booking and paid in full with your tour deposit.
- Insurance Terms and Conditions apply and will be attached to your Cover-More Travel Insurance schedule which will be forwarded to you following purchase. Please ensure you take time to read through the policy wording and make yourself familiar with the cover it offers.
- Activation of your Policy by way of claim is between you as the policy holder and Cover-More NZ Ltd.

6. Cancellations and Refunds

With Travel Insurance

Should you be forced to cancel your travel with us due to a claimable unforeseen event, Bay Tours will calculate the level of direct refund we are able to make to you. You then simply complete a Cover-More claim form for the difference between the Bay Tours refund and the amount you paid for the tour. Once approved, Cover-More will reimburse you less the \$25 excess.

Without Travel Insurance

Cancellation fees without Travel Insurance with us are as follows;

Multi-Day Tours

45 Days or more prior to commencement of the tour:

Full refund, less any non-recoverable payments to suppliers of the tour.

44 to 22 Days prior to the commencement of the tour:

100% loss of deposit paid.

21 Days or less prior to the commencement of a tour:

100% loss of tour price paid.

If you cancel at any time, and following discussion with Kaye or Kerren, you are able to get someone to take your place, you will receive a refund of the amount paid, less an admin fee of \$250 and any non-transferable payments to suppliers e.g., flights

Day Trips

4 Days or more prior to the Day Trip:

Refund in full

3 Days or less prior to the Day Trip:

No refund

We strongly encourage the purchase of Travel Insurance in order to provide peace of mind that the full amount paid is protected (as per Item 4 above).

7. Itinerary Variations

Bay Tours & Charters Ltd reserves the right to alter the tour package (including the itinerary) and substitute accommodation facilities and/or activities to those advertised should unforeseen circumstances beyond our control make changes necessary. The company will always endeavour, at their discretion, to select appropriate alternatives.

8. Tour Cancellations

Bay Tours & Charters Ltd reserves the right to cancel or withdraw any tour or any booking made for a traveller. In this event we will refund the total tour price, but will not have any further liability.

9. Liability

Bay Tours & Charters Ltd are not liable for and deny all responsibility for personal injury or property damage arising out of these activities.

The arrangement providers, namely the carriers providing land, sea or air travel, the operators providing transfers, accommodation, tours, meals and other services, all do so according to their conditions. The traveller accepts the arrangements subject to those conditions and accepts that their rights may be limited to those conditions as found in tickets, vouchers, signs, forms, contracts and the like.

The traveller has no right to claim against Bay Tours & Charters Ltd for any loss, damage, delay or injury caused to the traveller or their baggage whilst under the care or control of an arrangement provider. A traveller's baggage and personal effects shall be carried at owner's risk as provided for under the Carriage of Goods Act.

Bay Tours & Charters Ltd is not responsible for any losses or additional expenses due to delays or alterations in air, land or sea travel due to inclement weather, acts of God, strikes, breakdowns, civil unrest, quarantine, or other circumstances beyond its control.

10. International Tours

It is a condition of participation in any of our international tours that New Zealand residents purchase comprehensive travel insurance from the time of booking until the completion of

the tour. The insurance must include cover for lost or damaged luggage, accident or sickness, loss or theft of personal belongings and documents and the need to cancel or curtail your holiday. Please note that special conditions apply for pre-existing medical conditions with all travel insurance policies.

You may wish to consider insuring with Cover-More NZ Ltd through Bay Tours. Ask us about it.

The traveller has full responsibility for ensuring they hold a valid passport and all visas, permits and certificates required for the selected tour as well as any necessary vaccinations to comply with applicable regulations.

11. Brochure Pricing

The prices that appear in the Leisure Guide are valid at the time of publication. The Company reserves the right to change pricing at any time after publication should this be forced upon us. Should changes occur you will be notified at the time of booking.

12. Photographs

The photographs reproduced depict typical scenes experienced, but the subject matter may not necessarily be seen or experienced whilst visiting that destination on any given day. Whilst away with Bay Tours you may be included in some photographs and/or video taken by our guides and drivers that will be used for future promotional advertising purposes and by booking on to this tour you authorise the use of any images you are captured in to be used without any further consent or payment.

13. Acknowledgement and Acceptance

In booking a tour with Bay Tours & Charters the participant(s) acknowledge that they have read, understood and accept these conditions.

Bring a Friend Promotion!

If you **introduce a friend to Tour Club** who isn't already on our database, once they take their first trip with us, we will hold a credit for you to use towards any Bay Tours and Charters tour.

Just let us know at the time of booking that you would like to use your credit.

If their 1st trip is a day trip, you will receive a **credit of \$50**.

If it's an overnight or longer tour, you will receive a **credit of \$100**.

The more friends you recommend who take a trip with us, the more credit you will earn!



Make sure they say that you referred them when they register so we can keep track for you.

Tour No. 110 Celebrating Wairoa

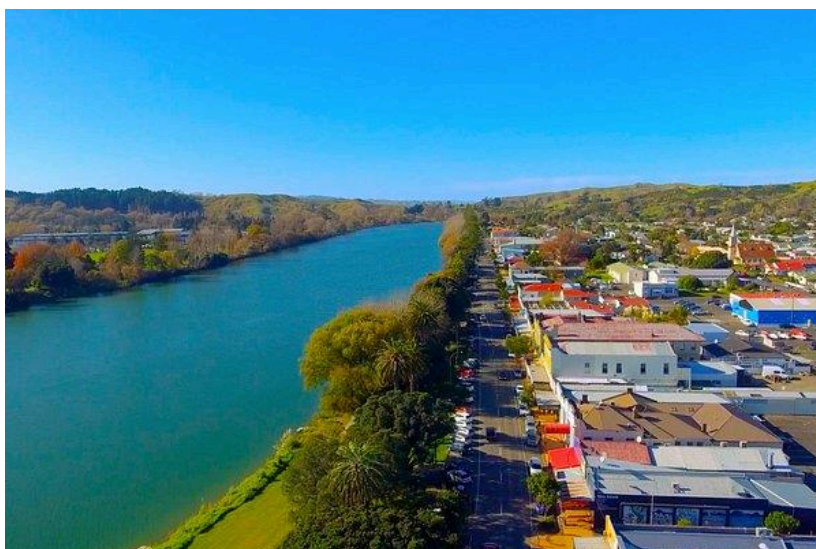
Date	Wednesday 10 th January
Times	All collected by 7.30am
Cost	Patron: \$165.00 Member: \$185.00
Payment	Full payment upon booking please
Price includes	Door to door transport, morning tea, lunch



The well publicized difficulties that continue to be faced by our friends in Wairoa, in the aftermath of Cyclone Gabrielle and other weather events, is heartbreaking. So, we've created a trip to highlight some of the great things that continue to happen in the north of Hawke's Bay and to show our support for a town that has often fed and watered Bay Tours groups over the years. (Pssst! Bring your wallet!). After morning tea at beautiful **Lake Tutira** our scenic drive will no doubt take in some of the new elements of the roading that have changed since our last visit prior to the cyclone. Our first stop in the district is north of the town at **Lake Road Lavender**. Here Fran,



the owner, has 2000 lavender bushes thriving without the use of sprays or other chemicals. Her range of oils, creams, balms and soaps is amazing, and Fran will give us a guided tour of her operation. We return to town and a riverside lunch – courtesy of legendary **Oslers Bakery** – with an opportunity to take a wander though town. After lunch we head out towards the mouth of the Wairoa River and **The Limery** where, on 10 acres, Dianne Downey and Paul Hyslop grow 4,000 lime trees across four varieties. What makes **The Limery** different is that they're not simply a grower selling to another packhouse operation. Dianne and Paul have invested in their own juicing operation with great success.



Featured on Country Calendar back in 2021, they are selling their juice to restaurants, bars and other outlets across New Zealand. And fostering the employment of locals in the process. These businesses, along with many others in the district, are vital to Wairoa's recovery and we're delighted to highlight and support their efforts. Come and lend your encouragement.

Tour No. 111 Chatham Islands

Date	Thursday 11 th – Wednesday 17 th January
Times	All collected by 8.30am
Cost	Patron: Twin Share \$5,390.00 Single shared facilities \$4,995.00 Single Room \$6,205.00 Member: Twin Share \$5,940.00 Single shared facilities \$5,495.00 Single Room \$6,825.00
Payment	Full payment upon booking please
Price includes	Door to door transport, accommodation x6, breakfast x6, morning tea x5, lunch x4, afternoon tea x4, dinner x6, flights

Join our small group tour and experience the absolute uniqueness that is '**The Chathams**'. Trees that lean one way, rugged landscapes containing an array of volcanic formations, ancient forest remnants, rolling farmland, sandy beaches, abundant oceans and spectacular, ever-changing scenery. After an overnight stop in **Wellington**, we'll fly into the Chatham Islands where our home for the next **5 nights** will be **Hotel Chatham**. During our visit, we'll explore it all. Highlights will include the views from the 200m high **Rangi Ika Cliffs**, the life size statue of **Tommy Solomon**, the last known full blooded Moriori, visit **Blind Jim's Creek** and search the coastline for **fossilized shark's teeth**. Also, the beautiful **Hapupu National Reserve Moriori Tree Cravings**, enormous **Basalt Columns**, **Port Munning Seal Colony**, **Kaingaroa Fishing Village** and much, much more. The warmth of the local hospitality is legendary and the quality of the seafood will astound you. This is a bucket-list trip for many and we can't wait to show you around.



Tour No. 125 Summer Visit to Bush & Beach

Date	Thursday 25 th January
Times	All collected by 8.45am
Cost	Patron Special: \$120.00 Member: \$150.00
Payment	Full payment upon booking please
Price includes	Door to door transport, morning tea, lunch



Imagine a summer's day with the sun on your back and the sound of fresh river or stream water flowing through lush bush. Join us for a day which begins as we head inland towards the mighty **Mohaka River** and our first stop for morning tea at **Glen Falls** – always a popular camping spot for locals and visitors alike.



Further up the road, next to a bend in the river, is a rock formation known locally as the **Mohaka River Organs** which we'll take a look at before carrying on with our scenic drive until we reach the mainland bird sanctuary at **Boundary Stream**. Here we'll have a delicious picnic lunch and the opportunity to walk into the past along accessible tracks through native bush. Watch the cheeky **kaka** birds feed and hear and maybe spot the beautiful **bellbird**, **North Island robin**, **tomtit**, **fantail**, **kereru** (native wood pigeon) and the rare and magnificent **kōkako**. On our way home, we'll drop into the beautiful beach at **Waipatiki** for a wander.



Tour No. 208

The Sunflowers of Pahiatua

Date	Thursday 8 th February
Times	All collected by 9am
Cost	Patron: \$185.00 Member: \$205.00
Payment	Full payment upon booking please
Price includes	Door to door transport, lunch, sunflower field entry

Anyone who has ever driven past a field of sunflowers knows what an incredible sight it is. There's something about these tall, elegant, halo-headed plants that speaks to us. The season for sunflowers is very short here in Hawke's Bay, but we think a little time spent in a field of these golden beauties is good for the soul.

Mangamaire Sunflower Field, south of Pahiatua, featured on an episode of Country Calendar in 2023 and was an idea hatched out of nowhere. Abbe, who owns the field with partner, Emile, has lots of random ideas and this one just kept coming back to her. Living on a busy road, and often crossing stock over the road, she noticed that rarely did anyone adhere to the 70km/hr speed limit, stop (or even slow down) at the intermittently used railway crossing. Of course, she had to be creative in thinking how she could slow everyone down. So, Abbe set about bringing the Sunflower Field to life, with a few of her own wild farm kids in tow. Early mornings and late evenings, hand sowing, hand weeding, and then hand picking meant over 4000 people were warmly welcomed onto their farm over 12 days in early 2022. By their 2023 season, with a field over twice the original size, they had over 6000 visitors in a slightly longer 28 day season. All to view the incredible live exhibition that the **Mangamaire Sunflower Field** is. With two seasons now under their belt, Abbe, Emile, and their great team have huge plans for the 2024 season. And Bay Tours invite you to seize the moment and be part of it. We'll enjoy an 'off the main drag' scenic drive to the **Tui Brewery** at Mangatainoka for lunch. Then we head to Mangamarie to meet Abbe and spend some time wandering amongst the sunflowers and generally enjoying the ultimate summer vibe. Join us for a unique celebration of summer.



Remember to renew your

Patron Membership

for 2024! Your membership is valid from 31st January through to 31st January the following year, no matter when in that year you joined to be a Patron.

Fees are \$85 per couple or \$49 for a single. Please remember to put 'PATRON' in the reference field when paying.

Tour No. 213

Ken's Big Mystery Day Out

Date	Tuesday 13 th February
Times	All collected by 8am
Cost	Patron Special: \$160.00 Member: \$205.00
Payment	Full payment upon booking please
Price includes	Door to door transport, morning tea, lunch



In this latest edition of Ken's super-popular 'Tiki-tour' day of exploration, he's keeping his plans to himself. As always, he'll be taking us on a sightseeing route that might not usually be achieved in a day – hence the title. It's a Big Day.

What you can rely on is some amazing summer scenery and lots of laughs along the way. But where?? You can trust Ken. He knows where he's going.

Tour No. 216

Pop-Up Globe Shakespeare: Romeo & Juliet

Date	Friday 16 th – Saturday 17 th February
Times	All collected by 7.45am
Cost	Patron: \$685.00 Twin Share \$795.00 Single Room Member: \$755.00 Twin Share \$865.00 Single Room
Payment	Full payment upon booking please
Price includes	Door to door transport, morning tea, accommodation, dinner, premium ticket to show, breakfast

It's been four years since we last experienced the riotous and hilarious production of a **William Shakespeare** play presented the way the playwright himself envisioned it. After the pandemic saw the demise of the magnificent **Pop-Up Globe Theatre** building in Auckland – built

to perform The Bard's plays in the irreverent and thoroughly entertaining style of the original productions – we feared that was the end of this kind of audience-friendly rendition of the **Shakespeare** classics. BUT THEY'RE BACK! The man behind the original idea, Anthony Harper, has got the band back together to perform perhaps the greatest love story ever told – **Romeo & Juliet**. And this time in the deluxe surroundings of the **Sky City Theatre**. In characteristic **Pop-Up Globe Theatre Company** style, the stage is surrounded by the audience on three sides. With a beautiful Jacobean set and costumes, music, fights and dance, beauty, bawdiness and smut – just as **Shakespeare** loved it. With the lights up across the theatre so everyone shares the same space, a cast including names and faces you know and love and some of the most famous words ever written, this is entertainment at its most enjoyable. And this time with the luxury of a comfy seat! This'll be a small group overnight trip to **Auckland** for opening night. Don't miss this chance to experience this unique theatre event.



Tour No. 221

Patrons Lunch to Say Thanks at Hygge

Date	Wednesday 21 st February
Times	All collected by 11.35am
Cost	Patron: \$70.00
Payment	Full payment upon booking please
Price includes	Door to door transport, 2 course lunch



Another special 'Patron Only' lunch, this time at the wonderful Hygge at Clifton. Join Kerren & Ken for a **2-course lunch** at this fabulous seaside venue. Whether the sun's out or not, the welcome will be just as warm. A great chance for you to catch up with Tour Club friends and a way for us to say "Thanks!".



Tour No. 225

River City Steam Train

Date	Sunday 25 th – Monday 26 th February
Times	All collected by 8am
Cost	Patron: \$795.00 Twin Share \$895.00 Single Room Member: \$875.00 Twin Share \$975.00 Single Room
Payment	Full payment upon booking please
Price includes	Door to door transport, morning tea, lunch, dinner, accommodation, steam train & paddle steamer

We're so excited to not only reunite with our friends at wonderful group of train restorers based in the Kapiti Coast – but to also revisit perhaps the best vintage rail experience to be had in this part of New Zealand. This summer join us on a vintage train excursion to the beautiful river city of **Whanganui** pulled by the legendary '**Ja 1271**' locomotive, renowned for its speed and strength. This epic celebration of steam will also include a cruise up the **Whanganui River** on the extraordinary 19th Century coal-fired paddle steamer '**Waimarie**'.

Steam Incorporated – a



Day 1: This morning we make our way to **Palmerston North** to meet the vintage train as it sits, hissing and spitting, at the platform - seemingly straining to be let loose. We've secured a beautifully restored carriage to ourselves, with outside viewing platforms at each end so that you can enjoy all the sounds (and smells) of the steam age as well as the summer sun. Be amazed at the number of people who stop their cars, or come out of their houses, just to wave to this huge 'Iron Horse'. We'll race across the **Manawatu** and **Rangitikei** countryside enjoying the unique views that only rail travel can provide, whilst the thundering beast at our head gobbles up the miles. After the amazing scene of us crossing the railway bridge over the surging Whanganui River, we disembark and enjoy an altogether more tranquil steam experience as we board the fully restored paddle

steamer '**Waimarie**' and learn how travel was on NZ's first superhighway 120 years ago. We then return to our train and rumble back down the line to Palmerston North where we'll overnight after our exciting day.

Day 2: A very leisurely start to our Monday morning in **Palmerston North**. Enjoy a lie in at the hotel or wander to the shops and enjoy lunch in town before we depart and make our way back to the Bay in the afternoon.

This is a wonderful opportunity to trip back to the halcyon days of 'Big Rail' when steam was king and New Zealand had a railway system to be proud of.

This will be a hugely popular event, so book early to avoid disappointment.

Tour No. 225A

Daniel O'Donnell – Palmerston North

Date	Sunday 25 th – Monday 26 th February
Times	All collected by 8.45am
Cost	Patron: \$750.00 Twin Share \$865.00 Single Room Member: \$825.00 Twin Share \$940.00 Single Room
Payment	\$300.00 upon booking, balance due by Sunday 7 th January
Price includes	Door to door transport, accommodation, breakfast, morning tea, lunch, dinner, premium ticket to show



The Irish singing legend **Daniel O'Donnell returns to New Zealand in February 2024** and is promising a wonderful show full of Irish standards, and classics from the popular music songbook that have made him so adored the world over. Known for the close relationship he has with his fans, and his charismatic and engaging stage presence, Daniel is enjoying resurgent success in Australia and New Zealand and after more than 40 years in the spotlight, he's still in love with performing and with

audiences the world over. The show is at the lovely **Regent Theatre** in **Palmerston North** and we'll overnight in Palmerston North after the performance. Like past visits, Daniel's show is bound to be a sellout. Don't miss his unique, life affirming blend of music, song and laughter.

Tour No. 228

Exploring Tasmania

Date	Wednesday 28 th February – Wednesday 13 th March
Times	All collected by 12pm
Cost	Patron: \$9,905.00 Twin Share \$12,390.00 Single Room Member: \$10,895.00 Twin Share \$13,630.00 Single Room
Payment	\$5,000 upon booking, balance due by Mon 8th January
Price includes	Door to door transport, accommodation x14, breakfast x14, morning tea x3, lunch x5, dinner x14

In early **March 2024** Bay Tours will spend **13 Days** exploring this incredibly diverse place with all four points of the compass covered and loads in between. Here's just a taste of what our exciting itinerary has to offer;

Day 1: Our tour begins with an afternoon flight to **Auckland** where we overnight ready for our flight to **Tasmania** in the morning.

Day 2: This morning we take our direct flight from Auckland to Tasmania's capital city, **Hobart**. And after an orientation tour of the city, we settle into our base for the next four nights, the centrally situated and exciting new **Crowne Plaza Hotel** with stunning views of the city and harbour and rooftop restaurants & bar.

Day 3: Today we head south of Hobart, following the D'Entrecasteaux Channel, through the beautiful **Huon Valley** to visit the seaside town of **Margate** which offers shopping with a real difference. Then it's on for lunch at **Crawleighwood**, a private garden renowned for its maple woodlands and ancient Gondwanaland plantings. Later we visit Hobart's historic **Shot Tower**.



Day 4: A **FREE DAY** to explore **Hobart**, Australia's second oldest city, at your own pace. You may want to join your Tour Hosts at **Salamanca Markets** in the morning.

Day 5: We spend today at historic **Port Arthur Convict Settlement**, site of one of Australia's most notorious penal colonies. A guided tour and short harbour cruise provide different perspectives on the convict past. We also visit picturesque **Eaglehawk Neck** and **Pirates Bay**.

Day 6: We say "Farewell" to Hobart, for now, and head northwest climbing onto the **Central Plateau**. Amaze at '**The Wall In The Wilderness**', an astonishing work of art depicting the history of Tasmania's Central Highlands. Notice the changing landscape as we descend the Chamouni Valley to the copper mining town of **Queenstown**. Finally, we arrive at **Strahan Village** on the west coast, our home for the next two nights.

Day 7: Today we board the giant '*Spirit Of The Wild*' catamaran to cruise across **Macquarie Harbour** and up the **Gordon River** into the heart of Tasmania's wilderness. Ancient sassafras and myrtle rainforest lead us to **Heritage Landing** where we can go ashore amidst this incredible environment. After lunch onboard we voyage to **Hell's Gates** past **Sarah Island** – the worst convict settlement of them all. A full day's cruising concludes back at **Strahan** where there's time to explore the village before dinner.



Day 8: Continuing north we arrive at **Cradle Mountain National Park** and enjoy a guided 4WD tour including **Dove Lake** and **Waldheim Chalet** before we resume our journey towards the northern coast through mountains and grass plains to our hotel in the coastal town of **Smithton**.

Day 9: This morning we visit the historic village of **Stanley** nestled at the foot of an ancient volcano. Time to explore the town here & perhaps take the chairlift to the summit. Now we begin to head eastward across the northern coast of the island towards **Launceston**, Tasmania's second city. With its elegant Victorian

architecture and century-old parks, the city has one of Australia's best preserved early cityscapes. Dramatic **Cataract Gorge** is another highlight. Tonight, we stay at the elegant **Country Club of Tasmania**.

Day 10: This morning we follow the Tamar River north to the quaint Swiss-style village of **Grindelwald** then on to the fascinating **Mine & Heritage Centre** in the gold mining town of **Beaconfield**. After a guided tour we continue our exploration eastward through the former tin-mining towns of Scottsdale and Derby. We stop to admire the famous **War**

Memorial Tree Carvings at **Legerwood** before dropping down to the east coast and our overnight accommodation at pretty **St Helens**.

Day 11: Following the white-sand beaches of the east coast we head south visiting **East Coast Natureworld Wildlife Sanctuary** at **Bicheno** where we'll encounter the famous Tasmanian Devil, Wombats, Echidnas, Kangaroos & Wallabies as well as native birds and reptiles. After lunch we carry on south past 'Gulch' fishing harbour and ocean blowholes finally crossing the **Derwent River** back into **Hobart** from the east, checking back into the **Crowne Plaza Hotel**.

Day 12: After all our travelling, your day is **FREE** to relax and re-charge in, now familiar, Hobart.

Day 13: No visit to Hobart would be complete without a ferry trip up the Derwent River to **Berriedale** and the amazing **MONA** (Museum of Old and New Art). Created by the unconventional businessman and art collector, David Walsh, this complex of breathtaking architecture combines museum, art gallery, restaurants, music venues and open spaces that will captivate and engage you.

Day 14: Today we say our final farewells to Hobart and Tasmania and fly back to **Auckland** where, due to time differences, we must spend one more night before heading home to **Hawke's Bay** the following morning.

Forget what you think you know about Tasmania. This tour is the ultimate opportunity for visitors to this island jewel, to get under the skin of the place and connect with what matters. Couple this exciting itinerary with the reassuring level of care, service and attention to detail that familiar travelers have come to expect from Bay Tours and 'Exploring Tasmania' is a must-do experience. Kerren & Ken, Bay Tours owners are excited to host you on this trip.



Tour No. 302

Martinborough Fair

Date	Saturday 2 nd March
Times	All collected by 6.45am
Cost	Patron: \$130.00 Member: \$145.00
Payment	Full payment upon booking please
Price includes	Door to door transport, morning tea



The Rotary **Martinborough Fair** is held in the picturesque Martinborough Square. This iconic fair, reportedly the largest in Australasia, comprises over **480 stalls** selling artwork, crafts, clothing, food and other quality products. This day trip is one of our most popular year after year and as usual, it'll be an early start in order to provide as much time in **Martinborough** as possible. We'll stop for morning tea on the way and plan to **arrive around 11.30am**. There'll be plenty of time to wander at your leisure (and plenty of space on the coach to stash your goodies). We'll **depart by 3.00pm** and head home, stopping at Woodville Domain to eat what you have purchased from the fair for dinner before the last leg of the journey. This is the fair everyone talks about so come and experience it for yourself.



Tour No. 307

A Visit to Waihau Farm & Lunch

Date	Thursday 7 th March
Times	All collected by 8.45am
Cost	Patron: \$160.00 Member: \$180.00
Payment	Full payment upon booking please
Price includes	Door to door transport, morning tea, lunch



The **Puketapu, Rissington & Patoka** districts were hit hard by the effects of Cyclone Gabrielle back in February 2023. Nick & Nicky Dawson farm – along with their son, Ben, his partner Molly and their daughter, Libby – along Waihau Road at Patoka. As well as the bridge at Rissington being washed out, their Waihau Road bridge was damaged too, making road access impossible for a long time. But the younger generation are determined to come back strongly and have invited us to come out for morning tea and see how things have changed and progressed in this district of beautiful rolling hill country farms. We'll drive out to them via the **Dartmoor** area and check on how that district's recovering. Like many other farmers around the country, a significant event like a cyclone has caused them to think about resilience and diversifying and they see opportunities in 'Agri-tourism' as another string to their farming bow. We'll take a look at what they have in mind. After our visit we'll head over to **The Puketapu Hotel** – another business devastated in February and now on the comeback - for a delicious lunch before returning to town. This will be our first foray up Puketitiri Road to the Rissington & Patoka area for a while and the drive and vistas are always stunning. Join us as we show our support for more locals as they build back.



Tour No. 310

Taupō Market & Glassblowing

Date	Sunday 10 th March
Times	All collected by 8.45am
Cost	Patron: \$125.00 Member: \$140.00
Payment	Full payment upon booking please
Price includes	Door to door transport, glassblowing & garden entry



One of the great market days occurs in Taupo every Sunday. **Market Central** is a blend of the Taupo Farmer's Market with local artisan craft producers. Set on the lakefront next to town, **Market Central** is a fabulous destination for all those who love the atmosphere of a great market and who enjoy finding unique creations and wonderful food. We'll also be visiting the **Glassblowing Studio** of renowned artist Lynden Over. We'll watch the creation of beautiful art pieces in the studio and wander Lynden's **Glass Sculpture Garden** to experience the effect that natural light has on the sculptures in a garden setting. This day trip will reward all the senses so don't delay in booking your place.

Tour No. 313

Summer Progressive Lunch

Date	Wednesday 13 th March
Times	All collected by 11.30am
Cost	Patron: \$155.00 Member: \$175.00
Payment	Full payment upon booking please
Price includes	Door to door transport, 3 course lunch



We're very excited to present the summer edition of this very popular long-standing series of lunches where we enjoy a different course at three outstanding eateries in our region. This time we have two brand new restaurants featuring with the third being a favourite with superb waterfront views. And coincidentally, they're all in **Napier**, in fact two are neighbours. We start at **Casa Ahuriri** restaurant, in the building that used to house the now closed Speights Alehouse, on West Quay. Kerren and Ken enjoyed a superb dinner there recently, soon after it had opened, and thought "The Tour Club would love this!". We'll enjoy a delicious Italian inspired **Entrée** here and, unusually, we'll be walking to our next venue - because it's right next door at **The Gintrap**. Describing themselves as a Gastro Pub, these guys have been delivering wonderful food and jaw-dropping waterfront views for years now. We'll enjoy our **Main** course here before taking a short coach ride into town and to **K Kitchen & Bar** in the Masonic Hotel building on Marine Parade in central Napier. It's so good to see this wonderful space back to its best and with very experienced restaurateurs at the helm. A perfect spot to enjoy our **Dessert**. Part of the charm of these **Progressive Lunches** is the opportunity to try new eating places and this edition really delivers. As always, a fun-filled day to be had by all.



Tour No. 317

The Bridge to Nowhere

Date	Sunday 17 th – Tuesday 19 th March
Times	All collected by 8.45am
Cost	Patron: \$1,355.00 Twin Share \$1,585.00 Single Room Member: \$1,495.00 Twin Share \$1,725.00 Single Room
Payment	\$450.00 upon booking, balance due Monday 22 nd January
Price includes	Door to door transport, accommodation x2, breakfast x2, morning tea, lunch x3, dinner x2



Returning WWI soldiers were balloted land in the isolated **Mangapurua Valley**. But with no road access the hard life and meagre income that the rugged land offered up was near impossible to endure. Through the 1920s many of the families up the valley simply walked off their land. And by the time the government got around to completing the promised permanent bridge across the stream in 1936, finally giving road access, there were few families left farming there. When funds for the maintenance of the road to

the bridge were declined in 1942 the remaining families packed up and left. In the decades since, the bush has reclaimed the farmland and the road in as well. Only the pristine bridge, now seemingly sitting in pristine wilderness, remains as a reminder of human occupation. Here's a summary of our trip into this 'other-worldly' place;

Day 1: We leave Hawke's Bay via the '*Gentle Annie*' route from Omahu. We'll stop for a cuppa at **Kuripapango** before climbing *the Annie* into the Inland Patea and on towards Taihape. After lunch in **Waiouru** we pass through **Tangiwai** and arrive in **Ohakune** and the wonderful **Powderhorn Chateau**, our base for the next two nights.

Day 2: This morning we drive through **Raetihi** and descend to **Pipiriki** on the banks of the **Whanganui River**. There our local guides will meet us and we'll board jet boats and head upstream taking in the majestic scenery of the river and enjoying the stories and anecdotes of our experienced hosts. After nearly an hour travelling up the river we arrive at the **Mangapurua** jetty to begin the beautiful 40 minute walk that follows the stream and bush into the structure that has come to be known as '**The Bridge To Nowhere**'. We'll enjoy lunch here listening to tales of the history of this place and the unforgiving land. There'll be lots of time to explore before we begin the walk back to the river and our jet boat journey back downstream. On our return to Pipiriki we board our coach and return to our hotel. Perhaps a soak in their hot pool to ease weary muscles.

Day 3: We say farewell to the Waimarino District and begin our journey homeward enjoying the stunning vistas of **National Park** and the central plateau. A picnic lunch on the shores of **Lake Taupō** concludes our encounters with NZ's natural wonders before we return to 'the Bay'. This journey into one of the most remote parts of the North Island will visit places barely, and only briefly, touched by human habitation. The nature of this tour means places are strictly limited. Make sure you don't miss out.

Tour No. 320

Beach Hop & Lunch

Date	Wednesday 20 th March
Times	All collected by 8am
Cost	Patron: \$150.00 Member: \$170.00
Payment	Full payment upon booking please
Price includes	Door to door transport, morning tea, lunch



With the promise of a long summer ahead, here's a day for all those who love the sand between their toes and a paddle in the sea. We'll visit not one, not two, but **FOUR Hawke's Bay beaches** – each a little different from the other. Our first visit is to beautiful **Kairakau Beach**, east of Elsthorpe. We'll have morning tea here before we jump over the hill to **Mangakuri Beach**. Like so many beaches along our east coast, Mangakuri was the site of the station shearing shed and the wool bales were rowed out over the surf to coastal freighters waiting offshore. Next, we make our way to historic **Pourerere Beach** for a picnic lunch and a wander on the sand of the longest beach we'll visit today. Our final beach is **Aramoana** where the Victorian era McHardy homestead still stands proud as you drive into the settlement and the station's original woolshed sits right on the beachfront. We'll stop for an ice cream on the way home and after such a magic day along the Central Hawke's Bay coast, we'll need no rocking tonight.



Tour No. 322

Central North Island Cycle Trail

Date	Friday 22 nd – Thursday 28 th March
Times	All collected by 7.45am
Cost	Patron: \$3,355.00 Twin Share \$4,105.00 Single Room Member: \$3,690.00 Twin Share \$4,515.00 Single Room
Payment	\$800.00 upon booking, balance due by Thursday 1 st February
Price includes	Door to door transport, accommodation x6, breakfast x6, morning tea x4, lunch x5, dinner x6



The common thread of our annual two-wheeled odyssey in 2024, which will be in the North Island this time, is 'waterside wandering'. The **Waikato**, **Tongariro** and **Ohinemuri** rivers, together with gorges, inlets and coastlines are the backdrop to our cycle trail in late summer. An important distinction about our cycle tours away is you get to take your own bike. Yes, we will transport both you and your beloved bike so that you have total confidence and familiarity throughout. And as is customary on these tours, the actual time in the saddle on riding days will vary between 2 and 4 hours of gentle cruising interspersed with stops along the way. It's such a unique way to explore a place. Few cycle tours we've enjoyed over the last 8 years have delivered such diverse scenery and contrasting surroundings as this tour will. Meandering and thundering rivers, pristine lakes and estuary eco-systems are all part of our experience in 2024. Soaring rural vistas and thrilling cityscapes await. Come and experience the warm camaraderie and infinite variety of a **Bay Tours Cycle Trail** tour. There really is nothing like it for a shared biking experience across our glorious country.

Contact the office for a full itinerary.

Tour No. 402

Whanganui River & Forgotten Highway

Date	Tuesday 2 nd – Friday 5 th April
Times	All collected by 8am
Cost	Patron: \$1,995.00 Twin Share \$2,375.00 Single Room Member: \$2,175.00 Twin Share \$3,725.00 Single Room
Payment	\$650.00 upon booking, balance due by Monday 5 th February
Price includes	Door to door transport, accommodation x3, breakfast x3, morning tea x2, lunch x4, dinner x3

On this tour we will drive perhaps the three most magical and mystical roads in the central North Island. Over 4 Days we'll traverse Hawke's Bay's own '**Gentle Annie**' road across the vast Inland Patea between Napier and Taihape, the **Whanganui River Road** from the settlement of Pipiriki to Whanganui City itself and the '**Forgotten Highway**' which stretches from Stratford to Taumaranui. With plenty to excite us along the way. Here's the plan;



Day 1: Departing Napier we drive through Omahu and Sherenden on our way to **Kuripapango** for a cuppa by the river before we climb the Annie and make our way across the plateau. This is such a beautiful drive as we pass some of the remaining North Island high country stations such as Ngamatea, Black Hill and Timahanga. After lunch we'll be making a very special visit to Rita & Dave Hammond who farm outside Ohakune and recently featured on '**Country Calendar**' with their **Sustaina Grow** business utilizing



rough wool in garden planting and soil insulation products. It's a brilliant concept which we want to support. Ohakune is our last destination today and the welcoming **Powderhorn Chateau** where we spend our first night.

Day 2: This morning we descend down to the **Whanganui River**, via Raetihi, arriving at **Pipiriki**. Here we temporarily leave the coach and take a jet boat up this magical waterway through 'The Gorges' with Ken (a different Ken, who has spent

his whole life on the river). He'll share some of the stories about this part of New Zealand's first highway before we return to Pipiriki and begin our drive down the **River Road**. We'll enjoy a picnic lunch at the beautiful St Joseph's Church at **Jerusalem**. After lunch and time spent exploring, we leave Jerusalem and continue south along this stunning scenic road, stopping at various points of interest, before making our way to our accommodation in **Whanganui** itself.

Day 3: We leave Whanganui behind this morning and head north through Patea and Hawera to **Eltham**. This is well and truly cheese country with multiple cheese factories in the town. We'll visit the **Eltham Cheese Bar** for a wee pre-lunch tasting of their wares before we stop at the excellent **Taranaki Pioneer Village** for lunch and a wander. Before we begin our drive of the '**Forgotten Highway**' we can't leave **Stratford** without taking a look at the famous **Glockenspiel** playing. Then we're off down the mystical highway with, hopefully, views of both Mt Taranaki and the three mountains of the Central Plateau. Don't be surprised if we're the only vehicle on the road as we pass emerald-green rolling pasture and thick stands of bush. We arrive at the Independent Republic of **Whangamomona** where we'll spend the night amongst the locals at the legendary hotel of the same name.

Day 4: We rejoin our trip along this iconic route towards **Taumaranui**, stopping at **Lauren's Lavender Farm** for morning tea before continuing on through Manunui, Kuratau and Tokaanu to our lunch stop on the shores of **Lake Taupo**. In the afternoon we follow the lake and head down SH5 and home.

The '**Grand Circle**' clockwise route of this tour will take us through some of the most remote country in the North Island. Places barely touched by the modern world. This is rare in the 21st century and that will be an adventure to be savoured.

Book your place and get ready to be amazed!





Tour No. 408

Exploring Blenheim to Christchurch

Date	Monday 8 th – Tuesday 16 th April
Times	All collected by 9.30am
Cost	Patron: \$4,995.00 Twin Share \$6,285.00 Single Room Member: \$5,495.00 Twin Share \$6,785.00 Single Room
Payment	\$1,500.00 upon booking, balance due by Tuesday 20 th February
Price includes	Door to door transport, accommodation x8, breakfast x8, lunch x3, dinner x7



This is a tour that has its origins back in late 2021. Circumstances since then have meant it wasn't possible until now to pull the many elements of this exciting tour together. Over **9 days** we will focus squarely on the north-east of the South Island with **Marlborough** as our northern boundary and **Christchurch** further south with a lot going on in between. The **Hurunui** district features heavily and we look forward to showing you some

wonderful places that you haven't been before or perhaps you're returning to a favourite spot from the past. Here are some highlights;

Day 1: A relaxed mid-morning departure from Hawke's Bay sees us overnight in **Wellington** in preparation for an early **Interislander** ferry sailing the following morning.

Day 2: The **Marlborough Sounds** are the gateway to our day this morning. After a quick stop for lunch in Picton, we continue our road trip south through, first Blenheim, then Seddon and Ward towards **Kaikoura**. This is an opportunity to see, close-up, the extent of the massive engineering works that have taken place on the coastal highway since the devastating 2016 earthquake. We'll stop at the remodelled **Ohau Point Seal Colony** – New Zealand's largest – then it's on to Kaikoura and the brand new **Sudima Kaikoura Hotel** and a night in this wonderful seaside town.

Day 3: We head to the 'Whaleway Station' to check-in for our morning out on the water with **Whale Watch Kaikoura**. This part of the NZ coastline is one of the few places in the world where *Sperm Whales* can be seen close to shore all year round. The 3km deep Kaikoura Canyon just offshore ensures an abundance of food that attracts *Humpback Whales*, *Southern Right Whales*, *Pilot Whales*, *Minke Whales*, *Orca* and even the largest animal to have ever lived on the earth – the *Blue Whale*. We will see any mixture of these up close, together with loads of other sea creatures. After lunch we take the legendary **Inland Road** showcasing incredible scenery with the St James Range as a backdrop. We cross the regional boundary from Marlborough into Canterbury, through the pretty villages of **Waiau** and **Rotherham**, before we arrive at the historic **Hanmer Springs Hotel**. This will be our base for the next two nights.



Day 4: Today we explore deep into the **Hurunui** district with the rare opportunity to visit two 'Gardens Of National Significance'. Our first visit is to **Coldstream** at **Culverden** which sits in the giant **Amuri Basin**. We'll enjoy a cuppa with owner Vicki Collett who'll tell us about, and show us around, her mature garden of 2 acres which surrounds the house built of Oamaru stone. Then it's on to the village of **Hawarden** and the magnificent

country garden called **Flaxmere** which has been recognised by the Royal NZ Institute of Horticulture for 50 years. We'll have lunch here as well as being shown around this awesome property. We then return to Hanmer Springs with time, perhaps, for a soak in the famous **Hot Springs** before a very special dinner.



Day 5: This morning we continue south through the Waipara and Waimakariri districts and on to explore the south of Christchurch city. Firstly, with a ride to the top of the Port Hills on the **Christchurch Gondola** and a cuppa at the café at the top. Then we'll drive through to **Lyttleton** for a look around, before venturing further around **Governors Bay** to the historic **Otoromio Hotel** for lunch. A real treat

awaits us this afternoon – a visit to the internationally acclaimed **Ohinetahi**. Home of renowned architect, the late Sir Miles Warren. Originally established in the 1850s, the house and garden were purchased and re-designed by Sir Miles, with his sister and brother-in-law, in the 1970s. And this magnificent property still sings today. We return to the centre of the city and the stylish **Fable Christchurch Hotel**.

Day 6: Today is a **FREE DAY in Christchurch** for you to relax and do whatever you want. Our hotel is right in the middle of the city and literally has the City Circular tram route flowing through the middle of it. We'll arm you with a Day Pass to help you explore and discover the latest exciting additions to Christchurch's new city centre.

Day 7: This morning we're up early to board the **Coastal Pacific Train to Picton** for a very different perspective of the coastal landscape. The huge panoramic windows and expert staff onboard will make sure you don't miss a single moment of this incredible journey along the Pacific Coast as well as rolling back-country vistas and views of incredible feats of civil engineering. River bridges, viaducts across gorges and tunnels through mountains, these are all part of the exciting **Coastal Pacific** experience. But the day's excitement doesn't end when the train pulls into **Picton**. We then take to the water for an amazing cruise of **Queen Charlotte Sound** and a chance to try the myriad of seafood farmed along its shores and in its coves. Phew! What a day to stimulate the senses. We overnight in **Blenheim** tonight.



Day 8: Our day starts with a visit to magical **Longfield Estate Garden**, nestled amongst the vines of the Wairau Valley. The charm and elegance of this structured European-style garden has created a soothing tranquility and the owners, Lynne and Rob Hammond, will host us and show us around their labour of love. Then it's time to head north and rendezvous with our Interislander ferry across the **Cook Strait** and back to Wellington and our favourite **Copthorne Oriental Bay Hotel** to lay our weary heads.

Day 9: We make our way home to the Bay today, but not before a stop in **Palmerston North** for lunch and a chance for some retail therapy.

In exploring the Marlborough, Kaikoura, Hurunui, Waimakariri and Christchurch districts, using various modes of transport, and taking a variety of routes, we gain a more complete view of a part of the country often traversed, yet overlooked. An incredibly diverse landscape, an amazing array of activities and people showing the best of old-fashioned hospitality, will be the hallmarks of this fabulous tour.

Come and enjoy a uniquely Kiwi view of this wonderful part of New Zealand.

A New Level of Tour Club Membership

Bay Tours invites you to become a

Patron Member

We invite all members to consider becoming an inaugural **Patron Member** which, for the payment of a modest annual subscription of \$49pp, or \$85 for couples, will give you access to specially discounted prices on each and every Trip and Tour you book. The more you travel with us, the more you'll save.

Becoming a **Patron Member** will also gain you access to exclusive offers of heavily discounted Patron Only Lunches at various restaurants and cafes through the year. You'll see one of these listed in this Leisure Guide.

And if these opportunities weren't enough reason to join, there's more...

We've partnered with a number of prominent retail and hospitality outlets who will grant you exclusive discounts when you present your **Patron Member** Card in their establishment (See more about this on the next page).

So, to summarise, here's why becoming a **Patron Member** makes sense;

- A discounted price on every Trip and Tour we offer.
- Access to Patron Only Lunches through the year at specially discounted prices.
- Special discounts at partner retail and hospitality establishments.
- All this for a modest inaugural subscription of \$49pp or \$85 for couples.

Invest in your touring year by simply emailing tourclub@baytours.co.nz or calling our office on 06 845 2736 ext. 1 and becoming a **Patron Member** today.

PATRON PARTNER BENEFITS

The businesses below have partnered with us to offer additional benefits to Tour Club Patrons. Sign up now to enjoy these exclusive discounts.



Lone Star - Napier

You and your guests enjoy 10% off the bill when you dine together at Lone Star.



Ahuriri Pharmacy

Get 10% off all your health and beauty needs or gifts for your family and friends.



Silky Oak Chocolate

Indulge in some gourmet treats and get 10% off retail and food (including café)*.



Bay Plaza Pharmacy

Shop for all your beauty and healthcare needs and get a 10% discount.



Birdwoods

Treat yourself to a coffee or stay for lunch and get a 10% discount on all café items.



We sow, you grow

10% off all locally grown herbs, vegetables and plants for your garden.

To get your offer, you will need to show your current membership card

***Discount not available on already price reduced items.**



Tour No. 409

Molesworth & Rainbow Stations & More

Date	Tuesday 9 th – Saturday 13 th April
Times	All collected by 8am
Cost	Patron: \$2,975.00 Twin Share \$3,435.00 Single Room Member: \$3,275.00 Twin Share \$3,735.00 Single Room
Payment	\$800.00 upon booking, balance due by Thursday 8 th Feb
Price includes	Door to door transport, accommodation x4, breakfast x4, morning tea x2, lunch x2, dinner x4, flights



This classic tour has become something of a Bay Tours institution. The experience of driving through New Zealand's largest farm – nearly 450,000 acres spanning a major part of the upper South Island – is a kiwi rite of passage. The stunning scale and rugged beauty of **Molesworth Station** together with another neighbouring giant, **Rainbow Station** with its latticework of pristine lakes, is contrasted by the alpine tranquillity of the village

of **Hanmer Springs** where we'll be based. Another stark contrast to the impression of permanence of **Molesworth** can be seen when we visit **Woodchester Station** where the effects of the Kaikoura earthquake will astound you. A **FREE DAY** in Hanmer Springs itself allows you time to relax or explore this beautiful alpine village between our big station touring days.

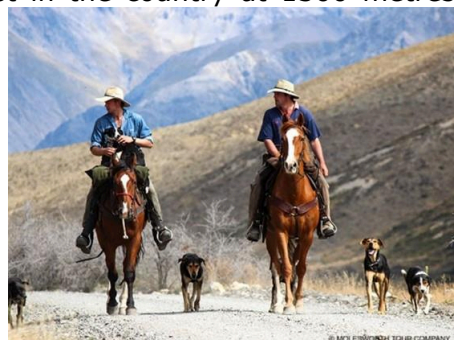
Day 1: We depart Hawke's Bay Airport this morning and head for **Christchurch**. There we'll be met by our local guide, Mark Gilbert. Mark's company, Molesworth Tours has 40 years experience guiding into the Molesworth and Rainbow back country and has been leading Bay Tours trips through the area for more than a decade. Mark will collect us from the airport and we'll drive north towards **Woodchester Station**, east of Hanmer Springs and nestled in the shadow of the St James Range. We enter **Woodchester** itself along the 6km driveway. Here the Kelly family will host us for lunch and show us some astonishing evidence of nature's power which has transformed their lives forever. Later in the afternoon we make our way to **Hanmer Springs** and our superb centrally located base, the cozy **Drifter's Inn** where hosts Adele and Andy MacLeod will look after us for the next four nights.

Day 2: Today we're collected by Mark in a special 4WD mini-coach and we head over **Jack's Pass** and into the Clarence Valley and **Molesworth Station**. We'll visit iconic points on the massive station such as the 150yo **Acheron Accommodation House**, **Isolated Flat** with its hundreds of acres of rippling clover and tussock grass, and the main central homestead complex with its century old cob buildings. Cattle share the sides of the sparkling rivers with Canada Geese and Paradise Ducks. It's difficult to prepare yourself for the sheer vastness and beauty of the place. Passing through sections of the **Muller** and **Tarndale Stations** on the way back, we descend back into **Hanmer Springs** again via the rugged **Jollies Pass**. A day heavy with memorable moments.

Day 3: There's time to relax and reflect on yesterday as you have a **FREE DAY** in Hanmer Springs today. Explore this beautiful alpine village with its many bush walks, wander the tranquil grounds of the old Queen Mary Hospital with its historic buildings or enjoy a soak

in the pristine thermal Hot Pools of the spa which gives the town its name. Tonight, we'll dine together at the hotel.

Day 4: Today we're back with Mark as we again climb Jack's Pass but, this time, we head west up through the former **St James Station** and into the Spenser Range to **Lake Tennyson**. We'll drive over **Island Pass**, the highest in the country at 1300 metres, before descending into **Rainbow Station** itself. Craggy beech-covered mountains sweep down to the boulder-strewn rivers that bisect the valleys. Remarkable for its transitioning landscapes, Rainbow Station is much smaller than Molesworth in area at a 'mere' 20,500 acres. Usually carrying around 14,000 head of stock – a mix of sheep and cattle this time – its diversity of terrain and climates has made its productivity legendary. What a contrast.



Day 5: We depart Hanmer Springs this morning and make our way back to **Christchurch Airport** but not before a visit to **Iron Ridge Sculpture Park** on the banks of the Waipara River. Here sculptor Raymond Herber has, over 20 years, transformed a former limestone quarry into a huge, stunning, exhibition space like no other. Then it is on to the airport where, after a late lunch, we catch our flight back to 'the Bay'.

Molesworth, Rainbow and Woodchester Stations make up a land truly alive with the evocative atmosphere of stockmen and shepherds, dogs and drovers, slough hats and well-worn saddles. It's a landscape of extremes and of the real cowboy, even today, and what an adventure it is to get a glimpse of their way of life and to meet some of the people continuing the legacy.

Places on this tour are extremely limited so do not hesitate in securing your spot.

Tour No. 4 | I Dinner at Valley D'Vine

Date	Thursday 11 th April
Times	All collected by 6pm
Cost	Patron Special: \$145.00 Member: \$175.00
Payment	Full payment upon booking please
Price includes	Door to door transport, 3 course dinner, 1 st drink



Following the runaway success of our first post-cyclone 'Support Dinner' at **Valley D'Vine** restaurant in **Esk Valley** last September, the outstanding evening of food and fun prompted calls for a repeat. It's been one of our favourite dining destinations for a number of years, not least because it's owned and run by the talented and irrepressible chef, **Greg Miller**. Over the years Greg has been a staunch supporter of, and fundraiser for, his local and regional communities. This has, for us here

at Bay Tours, always been yet another reason – as if another were needed – to scurry along to **Valley D'Vine** whenever we could. We're delighted to offer our support again for one of the hubs of the decimated community of **Esk Valley** who continue to need our support more than ever. So, for those who missed out on such a great night last time and to those of you who enjoyed yourselves so much the first time around, come and indulge in a '**D'Vine**' **3 course dinner** from one of our regions most lauded chefs. Join us and show your support.



Tour No. 417

Capital & Country Luxury Dining

Date	Wednesday 17 th – Friday 19 th April
Times	All collected by 8am
Cost	Patron: \$1,745.00 Twin Share \$2,075.00 Single Room Member: \$1,920.00 Twin Share \$2,250.00 Single Room
Payment	\$500.00 upon booking, balance due by Tuesday 20 th February
Price includes	Door to door transport, accommodation x2, breakfast x2, morning tea, lunch x3, dinner x2



Following the great success of our '*Luxury Lodge Lunches*' series over the last few years, we're delighted to present another culinary odyssey in a similar vein. This time we turn our sights to the south and take in five very different and unique dining experiences over 3 Days. Encompassing a wonderful cross-section of luxury dining from the Horowhenua, through our capital city, Wellington, and over the hill into the prosperous Southern

Wairarapa. This is a tour of indulgence and luxury. And it goes like this;

Day 1: We head south for our first foodie encounter for lunch with **Ruth Pretty**, caterer-to-the-stars, at her Garden Room in Te Horo. For nearly four decades Ruth and her husband Paul have been the premier caterer for Wellington's special occasions. We'll enjoy a light lunch centred on the kitchen garden, paddocks and orchard that make up their rural property. From there we continue into the city and settle into our **Wellington** hotel before heading to the heart of power dining in the capital, **Bellamy's** at the Beehive. Now run by the team at Logan Brown, one of Wellington's perennially lauded restaurants, **Bellamy's** has been the venue where Members of Parliament can host guests and plot with and against each other since 1854 – whilst still being within earshot of the summoning bells of The House. The Logan Brown team have added the elegance and sophistication our parliamentarians sometimes lack. An amazing dinner is in store.

Day 2: A relaxed start to the day sees us make our way over the Remutaka hill and follow the road around Lake Wairarapa to one of New Zealand's finest, and remote, luxury lodges. **Wharekauhau** sits with views over Palliser Bay and is often referred to as 'The Ultimate Farmstay'. Set in a working farm estate of 3,000 acres, the lodge has the grandeur and graciousness of an Edwardian country house. **Wharekauhau** has established a worldwide reputation for the understated luxury and privacy it offers its guests. We're very excited to be reunited with our friend and Executive Chef, **Norka Mella Munoz**, whose culinary talents we've enjoyed in past years at Treetops Estate, Kinloch Manor and Mangapapa. Norka will create a 4-course degustation style menu for lunch showcasing produce grown, foraged and sourced from the farm and neighbouring growers. What a treat!





But the indulgence doesn't finish at lunch. In the afternoon we make our way to the beautiful village of Martinborough and our accommodation for the night, nestled in the heart of The Square, the magnificent **Martinborough Hotel**. Superbly restored to its colonial glory – and beyond, we'll enjoy dinner in the restaurant that screams 'rustic chic' before retiring to one of their beautifully appointed rooms.

Day 3: A FREE MORNING to explore the village of **Martinborough** before we head to one of the district's famous wineries, **Tirohana Estate** for **High Tea** in the historic homestead. One of the oldest vineyards in Martinborough, the estate is renowned for the quality of its pinot noir wine and its stylish hospitality. The perfect way to finish our dining experience before making our way back to Hawke's Bay in the afternoon.

Whether you're an enthusiastic follower of all things food or looking for a few days of self-indulgence away from the cares of everyday life, this adventure will restore and refresh you in style. This is a small group tour with limited places available. Book now!

Tour No. 423

Autumn Pub Lunch & Quiz

Date	Tuesday 23 rd April
Times	All collected by 11.30am
Cost	Patron: \$150.00 Member: \$170.00
Payment	Full payment upon booking please
Price includes	Door to door transport, lunch



This latest edition of our popular series will see us return to one of our favourite venues, the splendid **Puketapu Tavern** for the first time since it was devastated by Cyclone Gabrielle in February 2023. Remember, this is a team event with each table forming a team to participate in the **Pub Quiz** through lunch. The format is pretty simple. There will be 8 rounds of questions arranged around the lunch courses with each round having a broad category such as 'Geography' or 'Television & Movies'. Peter, our Quizmaster, will ask 10 questions in each round and each team

writes down their answers on the sheet provided. Ken collects each team's completed answer sheet at the end of the round and replaces it with a blank sheet for the next round whilst Kerren tallies the scores. Every few rounds Peter will read out the correct answers for the rounds just gone and Kerren will update us on the team scores so that everyone has an idea of how they're going. It's huge fun and everyone contributes something to their team at some stage. Prizes and prestige for the winners are up for grabs and there's also spot prizes so everyone's in with a chance. We'd particularly encourage you to come this time around and show your support for our hosts, who are the hub of the recovering **Puketapu** community. Join us for a great lunch and lots of laughs as the teams battle it out to be **Bay Tours Pub Quiz Champions**.



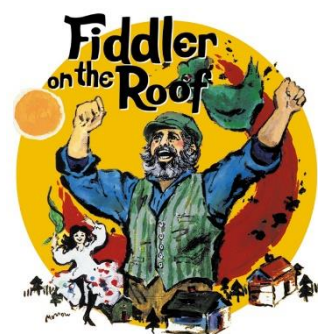
Tour No. 426

Fiddler on the Roof – Dinner & Show

Date	Friday 26 th April
Times	All collected by 5.50pm
Cost	Patron: \$160.00 Member: \$180.00
Payment	Full payment upon booking please
Price includes	Door to door transport, show ticket, dinner



Once again, Bay Tours are proud to invite you to another wonderful evening of entertainment at the Tabard Theatre in Ahuriri, home of the **Napier Operatic Society**, one of the oldest existing theatrical societies in NZ. Renowned for the quality of their shows, Napier Operatic will, in April, be performing a production of the



legendary 1964 musical **'Fiddler On The Roof'**. Set in the little village of Anatevka, the story centres on Tevye, a poor milkman, and his five daughters. With the help of a colourful and tight-knit Jewish community, Tevye tries to protect his daughters and instil in them a sense of traditional values in the face of changing social times and the growing anti-Semitism of Czarist Russia. **'Fiddler on the Roof's'** universal theme of generational differences cuts across barriers of race, class, nationality and religion and with familiar songs and intricate dances will leave audiences crying tears of laughter, joy and sadness. As always, we'll enjoy dinner at the Tabard before the show. Book your ticket now!

Tour No. 430

Delights of the Hauraki Gulf

Date	Tuesday 30 th April – Monday 6 th May
Times	All collected by 7.30am
Cost	Patron: \$3,325.00 Twin Share \$4,075.00 Single Room Member: \$3,660.00 Twin Share \$4,485.00 Single Room
Payment	\$950.00 upon booking, balance due Tuesday 5 th March
Price includes	Door to door transport, accommodation x6, breakfast x6, morning tea x2, lunch x2, dinner x6, all gulf island ferry tickets

Any discussion about the most picturesque areas of New Zealand wouldn't be complete without including the **Hauraki Gulf** – that body of crystal-clear water that lies off the east coast of Auckland. Framed by Matakana and Whangaparaoa to the north, Auckland's Waitemata Harbour to the west, the Firth of Thames to the south and Coromandel Peninsula in the east, the **Hauraki Gulf** is blessed with many spectacular islands with diverse personalities, histories, climate and geography. From the earliest Maori settlers, through the threat of invasion during the two World Wars to today, the islands and shorelines of 'the Gulf', and the communities that call it home, portray a unique picture of northern New Zealand.

We'll be spending time discovering the distinct characters of three of these islands – **Tiritiri Matangi, Waiheke & Kawau** as well as two of the Gulf's northern peninsulas,



Mahurangi & Tawharanui. Each place has its own stories. Here's a glimpse at our itinerary;

Day 1: We leave Hawke's Bay and head north to **Auckland** and settle into our hotel.

Day 2: Today we depart from downtown Auckland's historic Ferry Building and cruise, via



Whangaparoa, to the island of **Tiritiri Matangi**. Once home to the brightest light in the Southern Hemisphere, the island has become a world-recognised wildlife sanctuary. We'll take a guided tour through the island and learn of its incredibly diverse history and how it has achieved its current wildlife status. Upon our return to **Auckland** we settle back at our hotel full of the sights and sounds of a wonderful day.

Day 3: Today we make for **Half Moon Bay** and put our coach onto the vehicle ferry to **Waiheke Island**. The views of the eastern seaside suburbs of Auckland, and other islands in the Gulf are fantastic as we make our way across to Kennedy Point on Waiheke's southern coastline. We'll meander around the island taking in Surfdale, Ostend, Oneroa and Palm Beach before enjoying a wonderful lunch at the stunning **Batch Winery**. In the afternoon we take in Stony Batter and Cowes Bay at the eastern end of the island, before arriving at **Onetangi** and our beachfront accommodation for the night.

Day 4: This morning we cruise back to the mainland and enjoy time at beautiful **Mission Bay** before setting off northward, stopping for a wander at historic **Warkworth**. From here we get off the main drag and head for the **Mahurangi Peninsula**, in the northeastern corner of the Gulf and settle into our accommodation for the next two nights at quiet **Snells Beach**.

Day 5: Today we explore the district in and around **Tawharanui Peninsula** and Omaha Bay. With miles of pristine white sandy beaches, the area has long been a popular holiday getaway close to Auckland city. First, we'll visit the **Goat Island Discovery Centre** and learn more about the marine life of the Gulf from the scientists from Auckland University. Then we'll drop into the famous **Matakana Farmer's Market** for a look around and a spot of lunch before arriving at one of the most astonishing sculpture parks in New Zealand, **Sculptureum**. Here, owners Anthony and Sandra Grant have displayed their vast, eclectic and larger-than-life art collection across 9 outdoor and indoor galleries at their 25-acre Matakana property. Tonight we are guests for dinner at the **Sandspit Yacht Club**.

Day 6: The day starts as we join the **Royal Mail Run** cruise to **Kawau Island**, viewing the hidden coves and abundant seabird life. One of the largest islands in the Hauraki Gulf, Kawau was, from 1862, the private domain of former NZ governor, Sir George Grey. He built a stately home in what would become known as **Mansion House Bay**. We'll have lunch here and take a look around the historic home as well as wander the ornate gardens and grounds full of weka, wallaby and peacock. Later in the afternoon we return to Sandspit and enjoy a leisurely 'Sunday' drive, following the Gulf's western edge, back to **Auckland** and we'll need no rocking back at our hotel for our last night on tour.



Day 7: After a leisurely start we wend our weary way back to 'the Bay' comparing memories of our wonderful island-hopping holiday as we go.

For many, the opportunity to visit so many parts of this iconic maritime region of New Zealand is rare. This is the tour you've been waiting for, encompassing all the levels of Bay Tours service you've come to expect, and showcasing much of what this northern 'jewel in the crown' has to offer. Join us for an unforgettable odyssey around this island wonderland.

Tour No. 510

Best Exotic Marigold Hotel - Wellington

Date	Friday 10 th – Saturday 11 th May
Times	All collected by 8.30am
Cost	Patron: \$750.00 Twin Share \$890.00 Single Room Member: \$825.00 Twin Share \$980.00 Single Room
Payment	\$300.00 upon booking, balance due by Friday 15 th March
Price includes	Door to door transport, accommodation, breakfast, morning tea, dinner

Bay tours are delighted to invite you to experience the feel-good theatre event of 2024. First it was a bestselling book, then a blockbuster movie and now **The Best Exotic Marigold Hotel** is a smash hit stage show and is coming to Wellington from London's West End. It's a story about an eclectic group of British retirees who, not wanting to



inconvenience their families and feeling invisible in the country of their birth, meet each other for the first time at a 'residential hotel' in **India**. The residence is far from the opulent luxury they were promised. But as their lives begin to intertwine, they are charmed in unexpected and life-changing ways. A star-studded international cast are superb and the original stage production features an incredible set that depicts both the exterior and interior of a run-down colonial residence, and imbues it with a

sense of old-world Indian charm. The glorious **St James Theatre** is the perfect venue and we'll overnight at our favourite Wellington hotel, **Copthorne Oriental Bay**. Come join us for a heart-warming reminder that the most important things in our lives are the people we share it with.

Tour No. 513 & 527

Lunch at Cape Kidnappers #1 & #2

Date	Monday 13 th May & Monday 27 th May
Times	All collected by 11.30am
Cost	Patron: \$245.00 Member: \$270.00
Payment	Full payment upon booking please
Price includes	Door to door transport, lunch, 1 st drink



This delicious **3 course lunch** is put on especially for us at this stunning location – **The Farm at Cape Kidnappers** and is a perennial favourite with Tour Club members. There is also an opportunity to have a guided tour

of the **Lodge**. This is a lovely day out to one of Hawke's Bay's most exclusive locations. Hurry as numbers fill fast for this!



Tour No. 515

Dinner at St Georges

Date	Wednesday 15 th May
Times	All collected by 6pm
Cost	Patron: \$175.00 Member: \$195.00
Payment	Full payment upon booking please
Price includes	Door to door transport, 3 course dinner, 1 st drink



Dinner at **St Georges Restaurant** is always a special event. Owners Francky & Kathryn really know how to turn an evening into an event. As Head Chef, Francky has won countless awards and plaudits over the years for his delicious creations that feature produce grown in the restaurant garden or from his very small circle of premium suppliers. Kathryn ensures that the atmosphere in the restaurant does justice to Francky's creations and the sum total is an incredible evening of stunning food and great company. Join us for a wonderful **3 course dinner** with an autumn theme at one of our favourite venues.



Tour No. 517

Bluff Oyster & Food Festival

Date	Friday 17 th – Monday 20 th May
Times	All collected by 10.30am
Cost	Patron: \$2,555.00 Twin Share \$2,855.00 Single Room Member: \$2,775.00 Twin Share \$3,075.00 Single Room
Payment	\$850.00 upon booking, balance due Tuesday 20 th February
Price includes	Door to door transport, accommodation x3, breakfast x3, lunch, dinner x3, festival ticket

One of the many benefits of being an island nation is the bounty we reap from the sea – the kai moana. All manner of fresh fish, shellfish and other seafood are readily available to us. This situation is the envy of most other countries. As commercial fishing and seafood farming has increased, the seasonal appearances of delicacies such as the Bluff Oyster or West Coast whitebait are even more keenly anticipated. And one of the most iconic celebrations of all things seafood is the annual **Bluff Oyster Festival**. But the festival is about much more than just the humble oyster. All manner of seafood and other 'wild' foods are celebrated and presented in ways you never dreamed about. So much of the southern economy is tied into the sea and we're going to celebrate with the locals in 2024 given this festival has been cancelled due to covid and unforeseen circumstances for the past 2 years.



Day 1: First day of our adventure we'll fly from Hawke's Bay to **Invercargill** and settle into our accommodation at the **Ascot Park Hotel**.

Day 2: Today is the day of the **Bluff Oyster & Food Festival** itself. Imagine an abundance of oysters (surprise, surprise), pāua, salmon, blue cod, mussels, crayfish and whitebait. Add local wild venison, muttonbird, wild pork and escargot (yep, that's snails!) and this is a festive feast like no other. One year a stall even offered the traditional Southland cheese rolls with crayfish!! We'll transport you to and from the festival grounds.

Day 3: We visit **Transport World** in the morning. Still privately owned, this temple of transport pays homage to all manner of motor vehicle and a lot else besides. It's absolutely



world-class in its scale and presentation and there's definitely something here for everyone. After lunch at their café your afternoon is free time. Perhaps a walk through beautiful **Queens Park**, solve a mystery at **Solve It And Escape**, or bring out your inner child in the worlds' biggest sandpit at the controls of real diggers and bulldozers at **Dig This**. There's certainly plenty to see and do in this most southern city in

the world.

Day 4: We make our way home after a superb weekend in the deep south.

The **Bluff Oyster Festival** celebrates all things Kiwi and is an event not to be missed. Places are limited so book now.

Our own born and bred Southlander and oyster fanatic, Ken, now living in exile here in Hawke's Bay, will lead this tour into his native patch.

Tour No. 53 |

The Beach Boys Experience - Napier

Date	Friday 31 st May
Times	All collected by 5.45pm
Cost	Patron: \$195.00 Member: \$220.00
Payment	Full payment upon booking please
Price includes	Door to door transport, dinner, premium ticket to show

Pick up some *Good Vibrations* at this unforgettable celebration dedicated to the music of **The Beach Boys**. For nearly 60 years, The Beach Boys have embodied summertime. Sun, surfing, the beach, pretty girls in bikinis, driving with the top down. Favourites hits like "**Surfin Safari**", "**Barbara Ann**", "**Surfin USA**", "**California Girls**", "**Surfer Girl**" and "**Little Deuce Coupe**", turned the warm-weather months into a blissful utopia where perpetual happiness, young love, and endless freedom reigned.



Now, **THE BEACH BOYS EXPERIENCE** brings to Napier a mesmerising vocal wall of harmonies to capture the iconic sounds of one of the most commercially successful and critically acclaimed bands of all time. We'll enjoy dinner before the show at **Rosie O'Grady's** (formally the Provincial Hotel) before we take our seats for the show at the **Municipal Theatre**. Come and join us for some *Fun, Fun, Fun* at the coolest, grooviest, most far-out concert this year!

Tour No. 608

Feilding Craft Market

Date	Saturday 8 th June
Times	All collected by 7.45am
Cost	Patron Special: \$125.00 Member: \$160.00
Payment	Full payment upon booking please
Price includes	Door to door transport, morning tea, entry to market



Still the largest indoor craft market in the country with over 200 talented artisan stallholders displaying their wares, **Feilding Craft Market at Manfeild Stadium** is an event in its own right. Start your Christmas shopping early or just meander and take advantage of all the bargains for yourself. We'll stop at Dannevirke for morning tea on the way, just to build our shopping strength. Come and be part of the fun!

Tour No. 612

Patrons Lunch to Say Thanks at The Filter Room

Date	Wednesday 12 th June
Times	All collected by 11.30am
Cost	Patron: \$70.00
Payment	Full payment upon booking please
Price includes	Door to door transport, 2 course lunch



Another special 'Patron Only' lunch, this time at the fabulous Filter Room in Meeanee. Join Kerren & Ken for a **2-course lunch**. The quality of their food and service is always top-notch. A great chance for you to catch up with Tour Club friends and a way of us to say "Thanks!".



Tour No. 627

Dinner at Mangapapa

Date	Thursday 27 th June
Times	All collected by 6pm
Cost	Patron: \$180.00 Member: \$205.00
Payment	Full payment upon booking please
Price includes	Door to door transport, 3 course dinner



For more than 20 years **Mangapapa** has operated as a boutique hotel whose restaurant has a reputation for high quality cuisine and service. Old-world, white linen table settings set the tone for an outstanding **3 course dinner** in unhurried splendour. Come join us for a



fabulous dinner amid the tranquil surroundings of one of the regions finest historic homesteads. Nothing better!

Tour No. 927

A Luxury Weekend at Treetops Estate

Date	Friday 27 th – Sunday 29 th September
Times	All collected by 9am
Cost	Lodge Room Patron: \$2,265.00 Twin Share \$3,045.00 Single Lodge Room Member: \$2,495.00 Twin Share \$3,345.00 Single Villa Patron: \$2,865.00 Twin Share \$4,185.00 Single Villa Member: \$3,065.00 Twin Share \$4,505.00 Single
Payment	\$750.00 upon booking, balance due Thursday 8 th August
Price includes	Door to door transport, accommodation x2, breakfast x2, morning tea, lunch x2, dinner x2

Occasionally there are moments when the stars align and an opportunity, that was never thought possible, presents itself. Ultra-exclusive **Treetops Lodge** sits nestled in its 2,500 acre estate south of Rotorua and has, since its establishment in the early 1990s, been ranked amongst New Zealand's very finest luxury retreats. Arguably, better known internationally than by Kiwis, **Treetops** has always seemed, perhaps partly because of its isolation, other-worldly and unattainable. Whilst the interior design style is '*luxury hunting & fishing lodge*' at its best, the first impression that strikes you when you arrive is the tranquility of the place. This is partly because the **Lodge** itself is built over a flowing stream with the gentle sounds of trickling water a comforting constant when outside. Inside, guests make use of the Great Room, library, reading room, games room and conservatory throughout the day while still feeling connected to the native bush and forest outside through huge floor to ceiling windows. Deer roam the estate and trout swim in the rivers, and you might find either on your plate at dinner time. **Head Chef Felipe Ponce** has been at the heart of Treetop's '*Estate to Plate*' food philosophy for 6 years now. Every morning, after breakfast, he sources vegetables from the estate garden and meets with the estate gamekeeper to select game ingredients for the day. Honey from the estate hives and homegrown native and exotic herbs complement other produce grown nearby. All culminating in every meal being a superb culinary experience.



As a result of the relationship we've built with the **Lodge** over the last few years, we're excited to offer members an opportunity to experience a weekend retreat to **Treetops** in Spring. Choose from either the beautifully appointed **Lodge Rooms** or the more expansive, secluded **Forest Villas** and **Valley View Villas**. All provide deliciously opulent surroundings in which to relax privately. Beyond your door, wander the

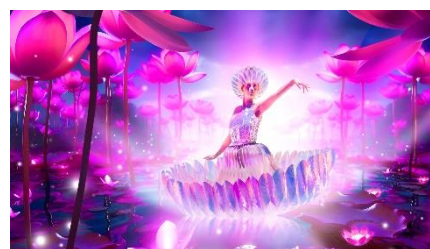
extensive network of paths through the estate, perhaps enjoy a spa treatment, have a go at archery or clay bird shooting, enjoy a game of billiards, chat to Felipe as he prepares in his kitchen or simply find a book from the library and settle into one of the many comfy armchairs inside or out. In September we'll spend two nights, across **3 Days** disconnected from the hurly-burly of our lives and reconnected with the tranquility of nature and an unhurried luxury rarely experienced. Spoil yourself and indulge all your senses by discovering the splendour of **Treetops Estate** in a once in a lifetime weekend of luxury.

Tour No. 928 & 1005

WOW #1 & #2 - Wellington

Date	Saturday 28 th – Sunday 29 th September & Saturday 5 th – Sunday 6 th October
Times	All collected by 8.45am
Cost	Patron: \$735.00 Twin Share \$895.00 Single Room Member: \$810.00 Twin Share \$965.00 Single Room
Payment	Full payment upon booking please
Price includes	Door to door transport, accommodation, breakfast, morning tea, dinner, premium ticket to show

What can we say about the **World of Wearable Art** show that hasn't already been said? It is simply this, a truly world-class exhibition show, created entirely in and by New Zealanders, which combines theatre, music, dance and even circus to showcase stunning pieces of 'art-to-be-worn' by designers from around the world. Each year the show seems to get even better. Bay Tours have been securing premium viewing seats and taking local Hawke's Bay people to the show in Wellington for years now. Get together with friends or make new ones on the journey to this experience that will dazzle the senses.



Tour No. 1113

Great Barrier Island Escape

Date	Wednesday 13 th – Sunday 17 th November
Times	All collected by 7.20am
Cost	Patron: \$3,630.00 Twin Share \$4,105.00 Single Room Member: \$3,995.00 Twin Share \$4,475.00 Single Room
Payment	\$850.00 upon booking, balance due by Tuesday 17 th September
Price includes	Door to door transport, accommodation x4, breakfast x4, morning tea x3, lunch x4, afternoon tea x2, dinner x4, all flights



Without a doubt the jewel in the crown of the beautiful Hauraki Gulf is **Great Barrier Island**. This almost mystical place, 100km northeast of central Auckland, has always seemed so far away and 'other-worldly' and yet, always part of the New Zealand idyll.

These days it's easier to get there than ever before. So, we're returning to 'the Barrier' in November 2024 to spend time, over **5 Days**, with the locals to experience one of New Zealand's last untouched paradises. This time will

allow us to enjoy everything at 'Island pace'. Here's a glimpse at what's in store;

We fly first to **Auckland** and then on to **Great Barrier Island** itself. Enjoying spectacular views of the Hauraki Gulf and Waiheke Island before landing at **Claris** and being met by our host, Leigh, who'll be showing us around.

Over the next few days we'll enjoy a wonderful series of spectacular, scenic destinations like **Medlands Beach**, **The Windy Canyon**, **Pacific Ocean Panoramas** and the

'*Forgotten Wharf*' at **Blind Bay**. We'll meet the locals and hear the stories at community spots such as **Tryphena Wharf**, **Shoal Bay Estate**, **The Barrier Social Club** and **Jacque's Haven**.

We'll take a cruise aboard the launch '**Sundancer**' up the island's west coast past old Kauri sawmills and deserted whaling stations, then head through the spectacular **Broken Isles** and **Man-O'-War Passage**. At **Port Fitzroy** we'll disembark and visit the amazing **Glenfern Sanctuary**, a predator-free forest, where we'll be guided around their native plant and bird reintroduction facilities and up to **Sunset Rock** for jaw-dropping panoramic views of **Port Fitzroy Harbour** itself. How about a walk along a gentle forest track bound by ancient **Nikau Palms** to **Hot Springs**



for a soak? Visit **Okupu Beach** to see some truly ancient Pohutakawa trees and take a look around an organic farm known as **Okiwi Passion**. Sharing a meal with friends is an occasion to be revered and enjoyed on 'the Barrier' too. Christine at **The Boar's Nest**, Orla at **Curraich Irish Pub** and Steve at **Mulberry Grove Store & Café** are examples of locals whose larger-than-life personalities are reflected in their hospitality. All this whilst staying at Leigh's own **Sunset Waterfront Lodge**, just a few metres from the water's edge in Shoal Bay.

For many, a trip to **Great Barrier Island** is a 'bucket-list' item. The opportunity to visit this iconic maritime region of New Zealand is rare. This is the chance you've been waiting for, encompassing all the levels of Bay Tours service you've come to expect. Join us for an unforgettable odyssey around this island wonderland.



Dining at Treetops – come and experience it for yourself on Tour #927



Tour No. 1121

Hidden Gems - Ashburton to Dunedin

Date	Thursday 21 st – Friday 29 th November
Times	All collected by 8.00am
Cost	Patron: \$To be confirmed Twin Share \$To be confirmed Single Room Member: \$To be confirmed Twin Share \$To be confirm Single Room
Payment	\$1,000.00 upon booking, balance due by Friday 20 th September
Price includes	Door to door transport, accommodation x8, breakfast x8, morning tea x4, lunch x7, dinner x8, flights



Over the years Bay Tours has taken many trips into the **South Island** hinterland. Spectacular inland destinations have lured us away from the coast. As a consequence, we have often sped past, or stayed only briefly in, towns and districts from Mid-Canterbury to North Otago that deserve more attention. Places such as **Geraldine, Temuka, Waimate, Duntroon** and **Oamaru** are gems

hiding in plain sight. These places possess rich, storied histories and conjure up images of iconic scenes and characters. Here's a brief summary of what's in store on this **8 Day** tour;

- Great farming estates from New Zealand's past
- Foodie heroes like **Barkers Of Geraldine** and **Whitestone Cheese** in Oamaru
- Natural wonders such as the **Elephant Rocks** of Duntroon and **Moeraki Boulders**
- Glorious gardens including **Broadfields** at Rolleston and **Trevor Griffith Rose Garden** in Timaru
- 19th century working wonders **Nicol's Blacksmith Forge & Clark's Flour Mill**
- Celebrate local heroes as diverse as **Jack Lovelock & Phar Lap**
- Visit quirky buildings including '**Dot's Castle**' at Waitaki Bridge & the **Kurow Pub**

All this and more as we scratch below the surface of these remarkable places off the southern highway. **Register your interest to be amongst the first to receive the confirmed itinerary and final pricing.**



Getting up close in Dusky Sound – Exploring Fiordland's Finest: August 2023



Kerren's Whisper

Our friends at the **Lake Opouahi Kiwi Creche** tell us that the creche itself is now back in a fit state to receive and rear Kiwi chicks again after significant cyclone damage. There are a number of eggs they are monitoring in the Kaweka Ranges and, all things going to plan, they expect to have a Kiwi chick or two for us to see by **March 2024**. If you'd like to know when we have a firm date for a visit to this beautiful site, please contact us to **Register Your Interest**.

As we go to print we are in the process of confirming our first Tour Club cruise offering since 2019. And I can quietly tell you that not only is it with our favourite cruise line Celebrity Cruises, but the ship is their multi-award winning **Celebrity Edge** (pic above). To be first to get all the details, call and we'll put you on our **New Cruise Register**.

We have had to change the dates of our **Ashburton To Dunedin** tour which was originally scheduled for February 2024. The new dates are in the latter part of **November 2024**. As we go to print we haven't quite finalized every element. So, look out in this issue for **Tour No. 1121** and the new dates together with a brief summary of the content of the tour. Let us know if you'd like to be advised once we have completed pricing, and receive a more complete itinerary.

NEXT LEISURE GUIDE DUE OUT IN JULY!

Unsubscribe: If you no longer wish to receive this Leisure Guide Please contact us and we will remove you from our database.

Ph: (06) 845 2736 EXT 1 for Tour Club or Email your Tour Club Co-ordinator Kayley at tourclub@baytours.co.nz www.baytours.co.nz



All Post to:

**PO Box 12221
Ahuriri, Napier 4144**